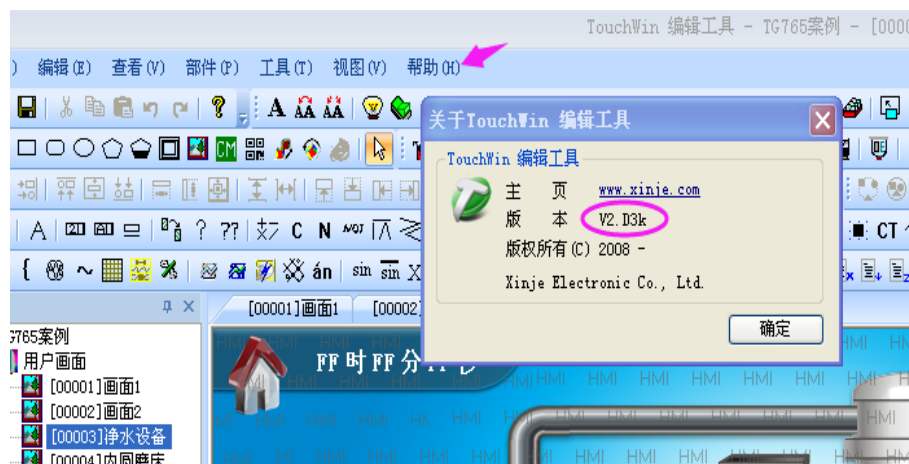


U-disk import program manual

The hardware support this function: TG, TE, TN series HMI version v2.d.3c and above.

The software support this function: touchwin version v2.d.3k and above.

Please check the label on the HMI for the version information.



There are two conditions for this function.

Condition 1: the HMI program was edited in software touchwin v2.d.3f. Refer to method 1.

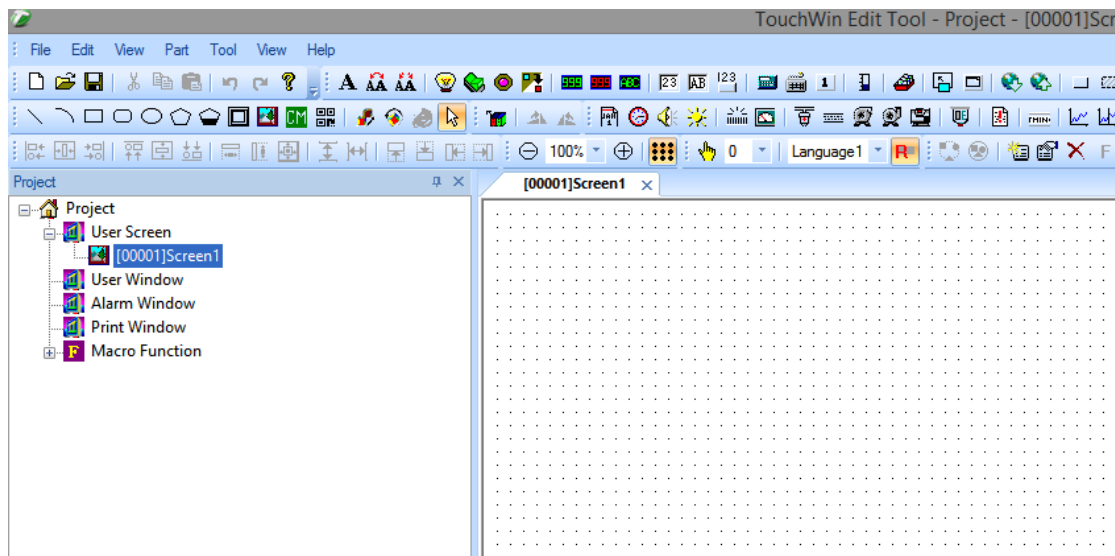
Condition 2: the HMI program was edited in software touchwin v2.d.3i and above versions. Refer to method 2.

Note:

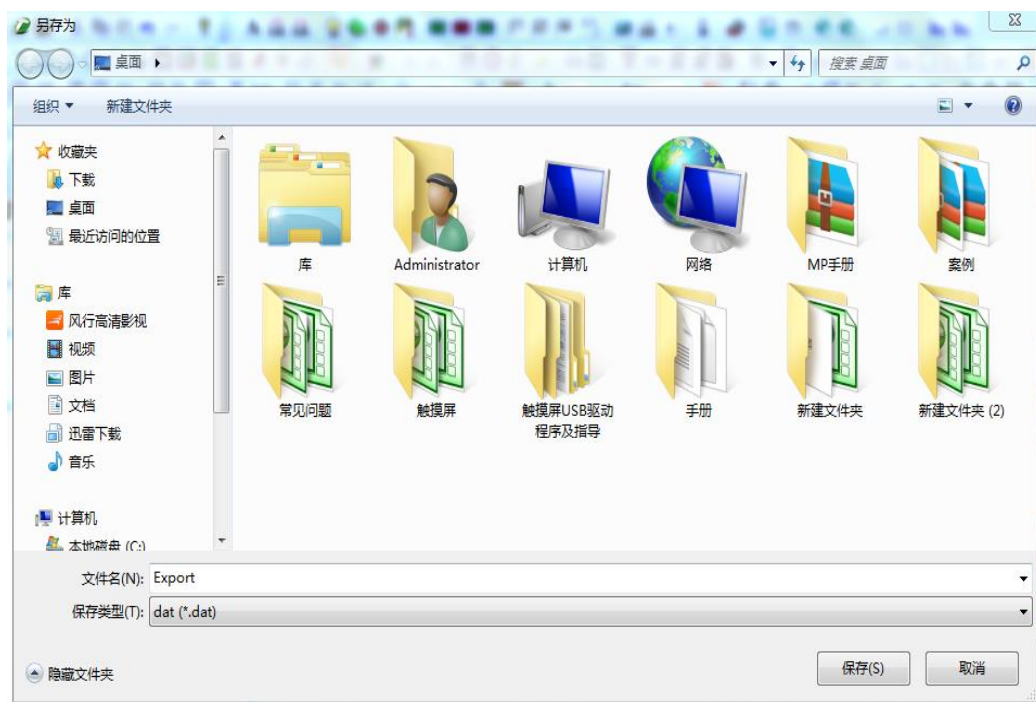
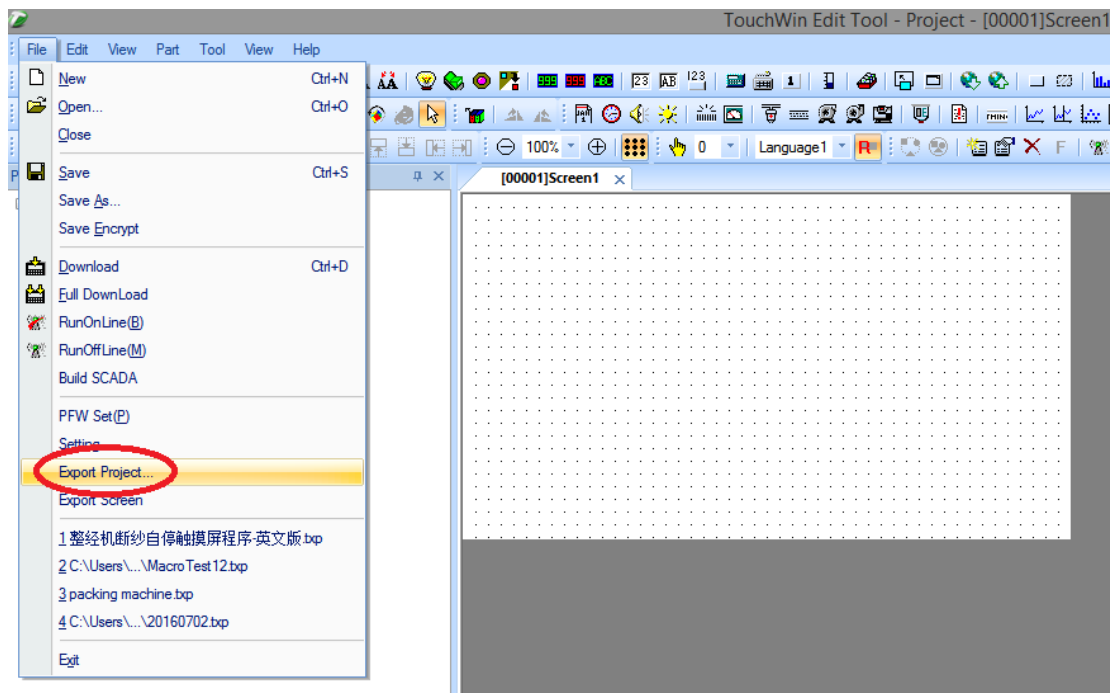
1. If user cannot be sure the program version, please do follow method 2, if the step3 has no import project, please do as method 1.
2. The import program file name must be Export.dat for method 1.
3. The import program file name can be changed for method 2.

Method 1:

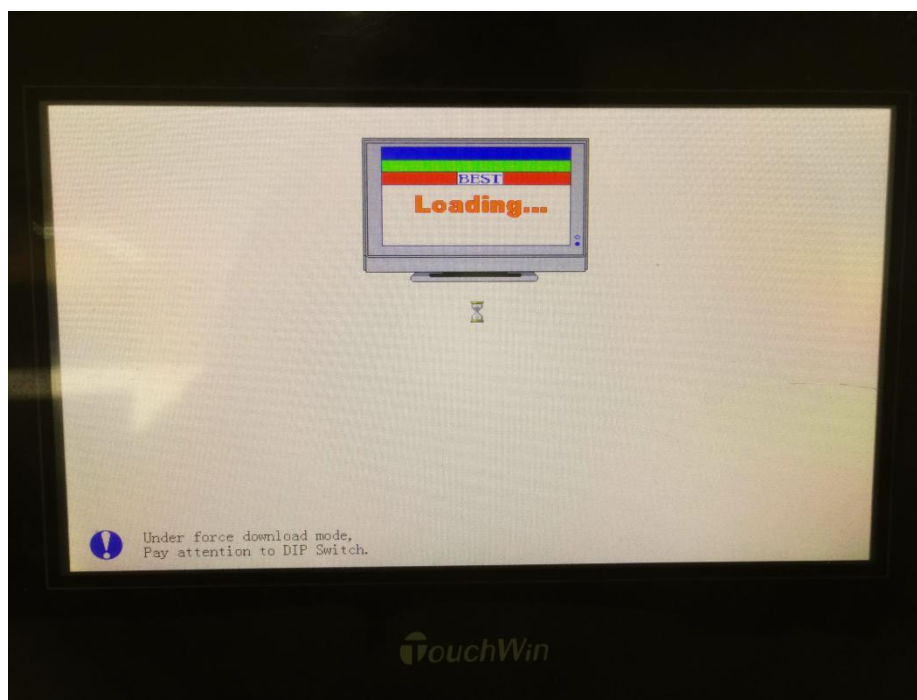
1. make a new program.



2. click File/export project..., save the file in your U-disk, please do not change the file name Export.dat.



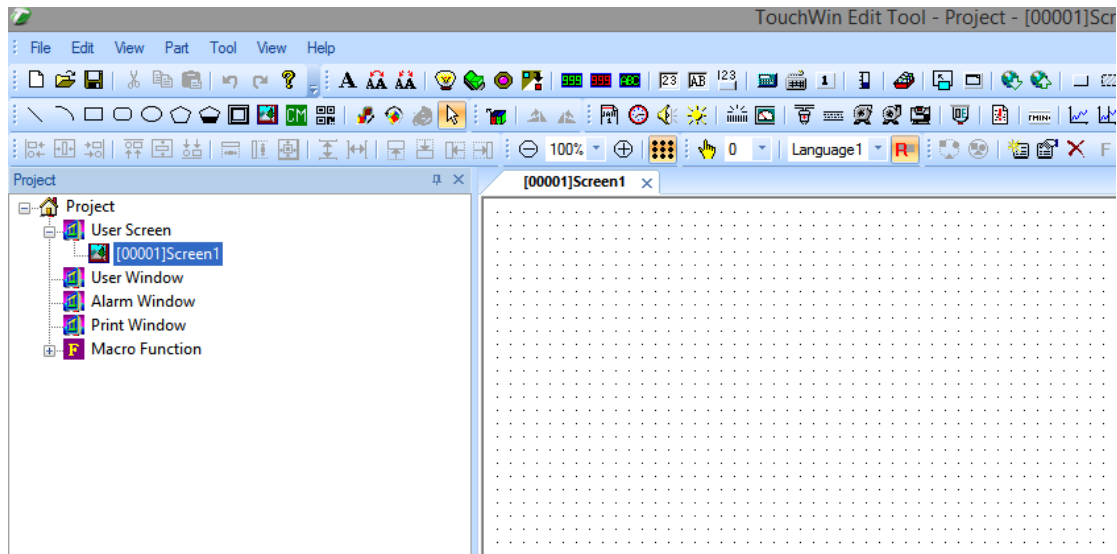
3. connect the U-disk in the HMI USB port, turn on the DIP switch 2 on the HMI, restart the HMI:



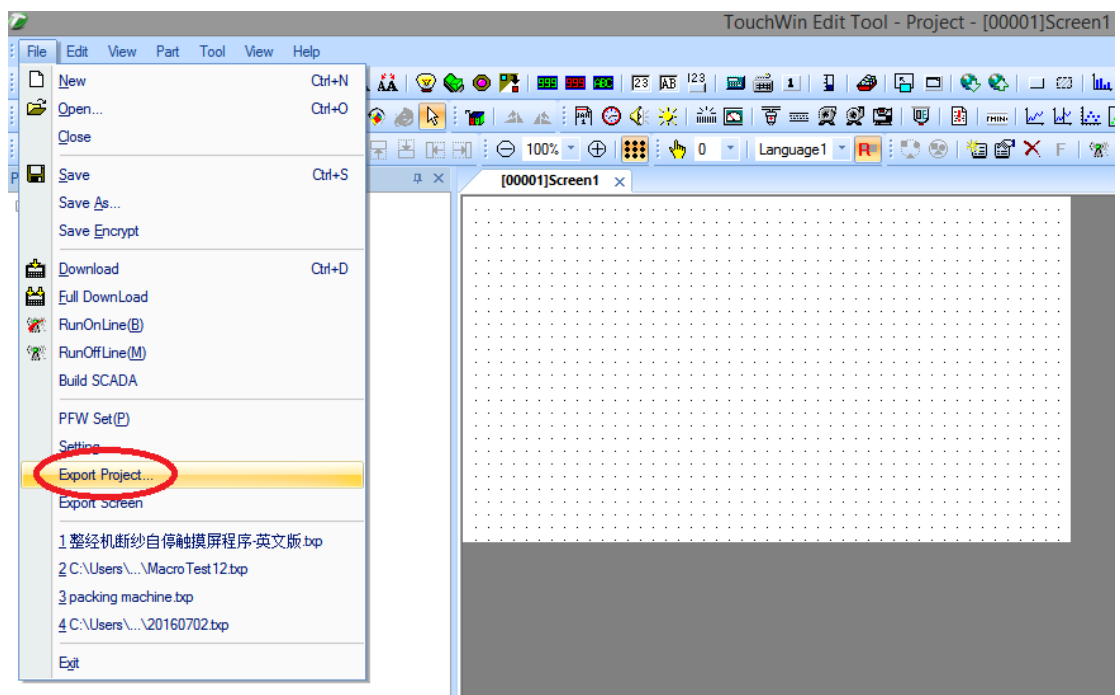
Wait for a moment, when it has “di di” sound, it means the import is completed. Now turn off the DIP switch 2, restart the HMI.

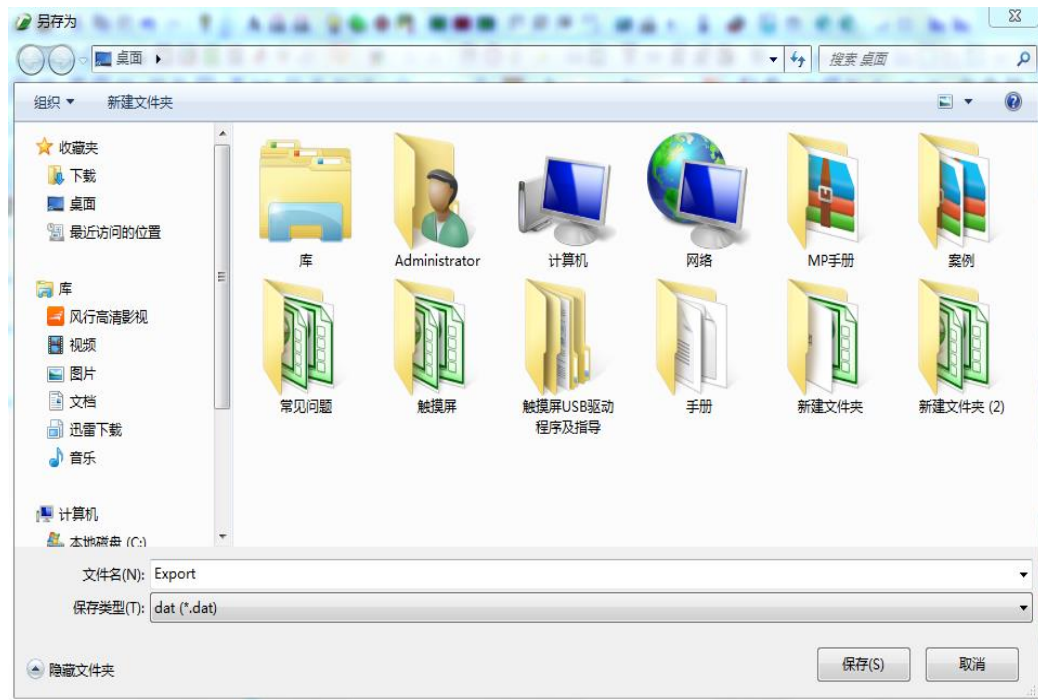
Method 2:

1. Make the new program



2. Click File/export project...

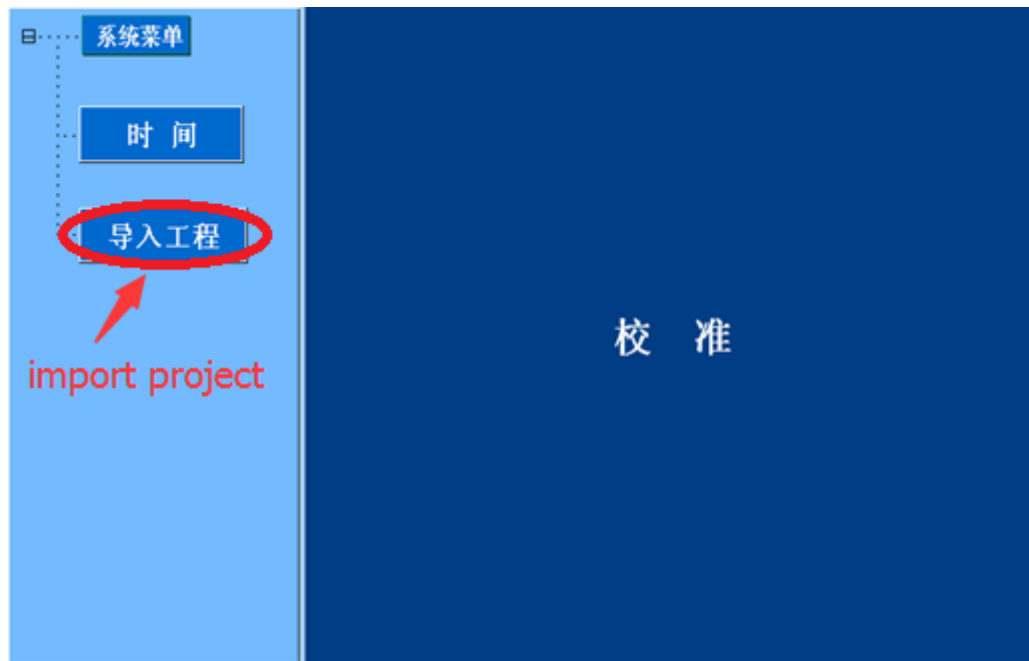




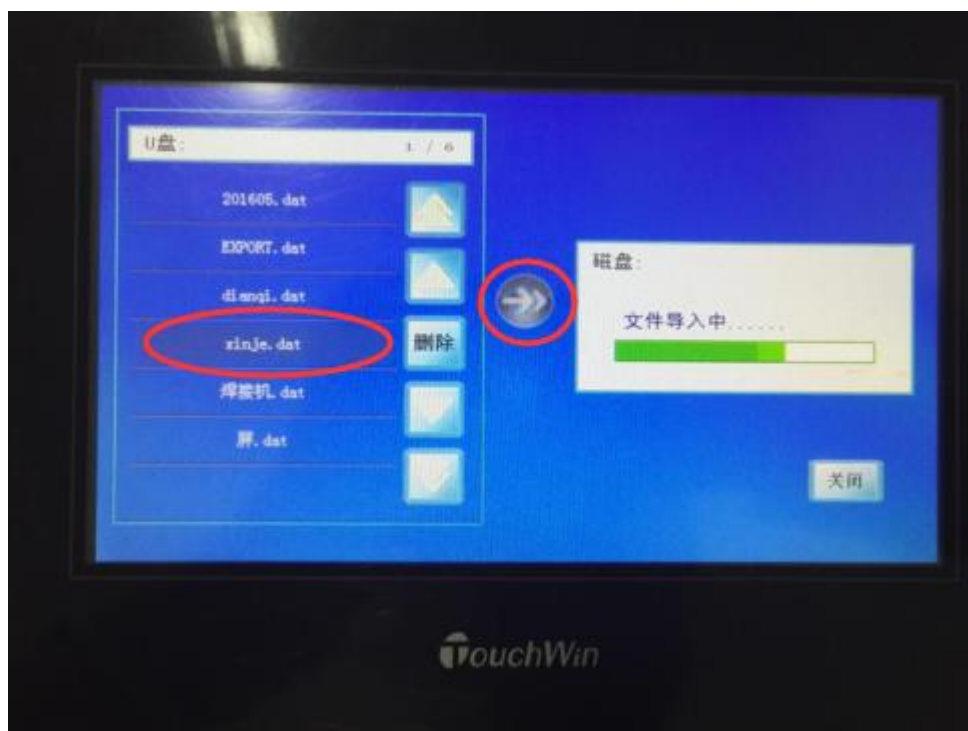
Save the file in your U-disk. The file name can be changed. But the name length cannot over 8 words, the file type is .dat.

3. connect the U-disk to the HMI. Turn on the DIP switch 3 on the HMI. Restart the HMI.





Click import project button on the HMI screen, it will show all the .dat file which can be imported. Please choose the file you want to import, then click the gray arrow to import project.



When the green process bar full, the import is completed. Please turn off the DIP switch 3, then restart the HMI.

If the import is failed, please check the following things:

1. Your HMI version must support U-disk import function.
2. Check the HMI model is correct, for method 1, the file name must be export.dat.
3. Check the U-disk attribute. It must be FAT32 16G or less capacity.